

**BHARAT<sup>4</sup>**

**DISCOVER  
THE POWER OF  
TECHNOLOGY.**

— THE ALL NEW —  
**BHARATBENZ HEAVY DUTY  
TIPPER TRUCKS**



POWERED BY  
**PROFIT**  
TECHNOLOGY



**BHARATBENZ**

## ***BOOST YOUR PROFITS WITH A HEAVY DUTY TIPPER***

BharatBenz, global pioneers in technology, bring you trucks powered by Profit Technology. Our trucks strike the perfect balance between cutting-edge world class technology and a rugged build that is perfectly suited to Indian conditions. The all new BharatBenz heavy duty tipper trucks are powerful workhorses built to maximise your profitability.





# **BHARATBENZ TRUCKS**

Built with superior SCR technology these trucks offer you unmatched fuel efficiency. Their superior power, gradeability and torque make them capable of handling any work and terrain. Their higher uptime, superior comfort & safety features, reliability and durability ensure that your trucks spend maximum time on the road. With these low maintenance tippers at your disposal, your enterprise is bound to scale new heights.

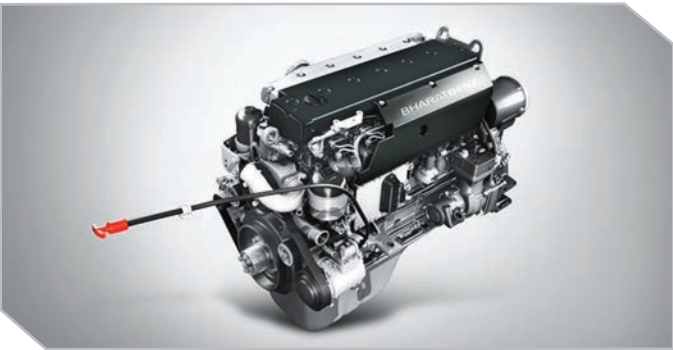


# ENHANCED TECHNOLOGY. IMPROVED PRODUCTIVITY.

The powerful engine of the BharatBenz heavy duty tipper truck is engineered with superior technology that makes it resilient and untiring. The higher power and torque translates to more work, faster trips and higher revenues. With higher gradeability and the ability to climb steep gradients carrying additional payloads with ease, these trucks are a great asset to have in the construction and mining sectors.

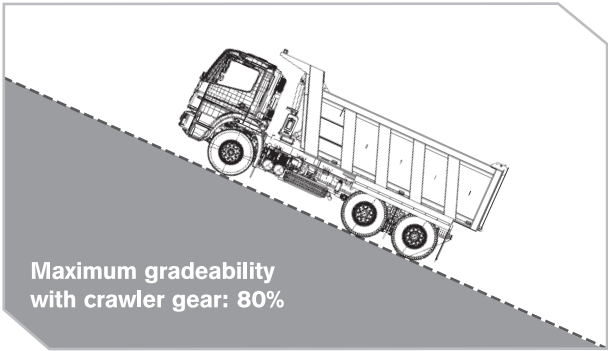
## ENGINE

Our tippers are equipped with powerful engines designed for heavy duty performance. These engines deliver higher power and high peak torque, where 90% of it is available even at a low engine speed of 900 rpm, resulting in better pickup and superior gradeability. This ensures more trips, thereby maximising productivity. Other features like unitised fuel injection pump, inductive hardening at crankshaft journals, noise optimal crankcase, Electronic Control Unit and faster turn-around time enhance the reliability of the engine.



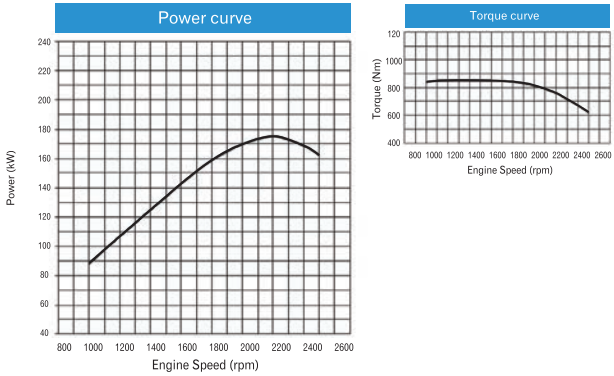
Engine DE175BSIV (2523C, 2528C, 3128C & 3128CM)

Model	Maximum power	Peak torque	Flat torque range
1623 (4X2)	235 hp (175 kW) @ 2200 rpm	850 Nm	1200 – 1600 rpm
2523 (6X4)	235 hp (175 kW) @ 2200 rpm	850 Nm	1200 – 1600 rpm
2528 (6X4)	281 hp (210 kW) @ 2200 rpm	1120 Nm	1200 – 1600 rpm
3128 (8X4)	281 hp (210 kW) @ 2200 rpm	1120 Nm	1200 – 1600 rpm
3128CM (8X4)	281 hp (210 kW) @ 2200 rpm	1120 Nm	1200 – 1600 rpm



\*In 2528C (6X4)

Power curve & torque curve for 1623C & 2523C



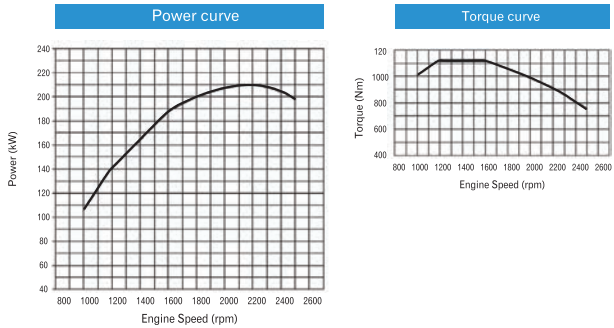
## GEARBOX

Our tippers come with gearboxes optimised to deliver flat torque, ensuring there is no loss of time while shifting gears. The 25 and 31 tonne tippers are equipped with a 9-speed G131 gearbox, with crawler gear ratio of 14.57:1 and first gear ratio of 9.47:1, providing more gear options, high torque at wheel end and superior gradeability. The higher centre distance of 142 mm between main shaft and counter shaft provides for bigger and stronger gears with more contact area, thereby increasing gear life. The 16 tonne tippers come with a G85 gearbox that offers a higher centre distance of 130mm.



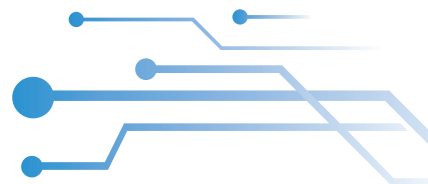
Gearbox (G131)

Power curve & torque curve for 2528C, 3128C & 3128CM





## UNMATCHED UPTIME. RUGGED BUILD.



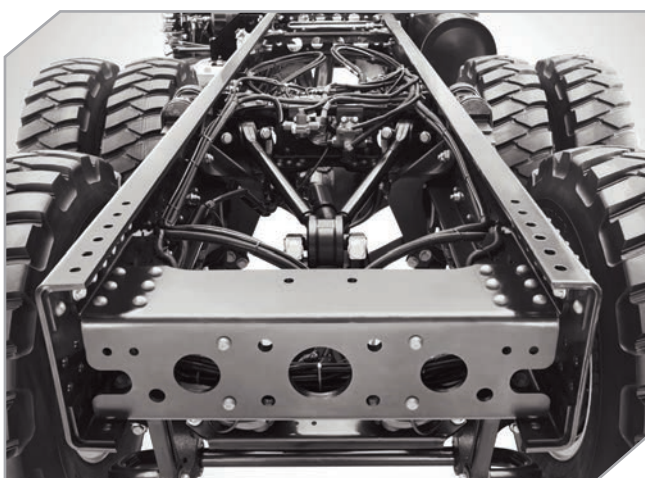
The BharatBenz heavy duty tippers are meant for hard work in tough conditions. To deliver under such harsh conditions, each component of these tippers have been designed and incorporated with meticulous care. Our highly reliable and durable tippers will always be on the move, guaranteeing maximum asset utilisation.



Clutch

### CLUTCH

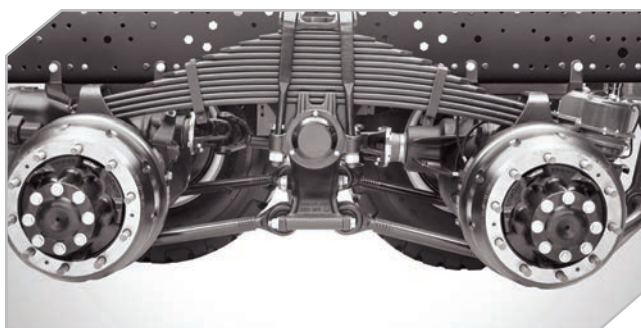
Our tippers come with larger clutch plate diameters thereby ensuring more contact area for better power transmission and lower slippage (395 mm for 1623C & 2528C and 430 mm for 2528CM, 3128C & 3128CM). Their higher wear depth of 3.5 mm means less maintenance and longer clutch life. The organic material with cushion segment between friction linings ensure consistent performance even at high temperatures.



Chassis

### CHASSIS

The BharatBenz heavy duty tippers are equipped with a 20% deeper chassis that enables them to carry higher payloads. A heavy duty steel frame of 288 mm depth in 16, 25 & 31 tonne tippers, 9 mm thickness and cross members of full depth provide for greater chassis stiffness. This in turn improves the load bearing, torsional and bending abilities of our tippers. It has an internal flitch with selective reinforcement on both top and bottom flanges which lends it a robust and an optimum weight design. The shot-blasted and powder-coated frame of the chassis increases its surface strength. This makes it corrosion resistant and therefore last longer.



Bogie suspension at rear

### REAR SUSPENSION

The heavy duty bogie suspension in 25 & 31 tonne tippers and semi-elliptical suspension in 16 tonne ensure our tippers can operate even in the toughest operating conditions. It also improves stability and load carrying ability of the vehicle and has lesser number of moving parts, which reduces the service intervals.



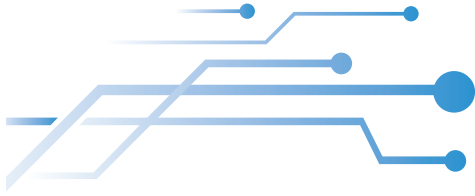
Elevated brake chambers

### BRAKES

Our tippers are fitted with a braking system that has a wider and thicker brake lining, which makes it long lasting. It also ensures the braking response is quick and efficient. The top mounted and elevated positioning of the brake chamber on the rear axle protects it from any external impact.

### REAR AXLE

The tippers have a strong and durable heavy duty banjo type axle; with 2528CM and 3128CM having a Meritor hub reduction axle with an axle reduction ratio of 5.39 and 6.18 respectively and a low reduction ratio. This gives better torque at the wheels and traction, which results in better pickup. The large face width of the crown wheel provides greater contact area leading to better load distribution which in turn leads to increased life of the crown wheel and pinion.



## ENGINEERED TO CONQUER ANY TERRAIN.

Equipped with a host of advanced features, our tipper trucks can easily negotiate sharp turns, lofty hills and narrow roads.



### ENGINE BRAKES

The constant throttle valve cuts off the flow of exhaust gases from the engine during application of the engine brake, thereby slowing down the vehicle. This ensures better control of the loaded vehicle during downhill operations and improved life of brake lining.



Winding roads

### SHORTER TURNING CIRCLE DIAMETER

A shorter turning circle diameter of 13.5 m for 16 tonne tippers, 15.5 m for 25 tonne tippers and 19.2 m for 31 tonne tippers offers best-in-class manoeuvrability on winding roads and at sharp corners.



Slushy roads

### INTER-WHEEL AND INTER-AXLE DIFFERENTIAL LOCK

These prevent the spinning of wheels in slushy and wet surface operations, leading to improved manoeuvrability.



3128C Higher ground clearance

### HIGHER GROUND CLEARANCE

Higher ground clearance of 234 mm for 1623C, 2523C, 2528C, 3128C and 287 mm for 3128CM allows for better manoeuvrability on uneven surfaces and prevents stone hits to under chassis components while tackling rough terrains.

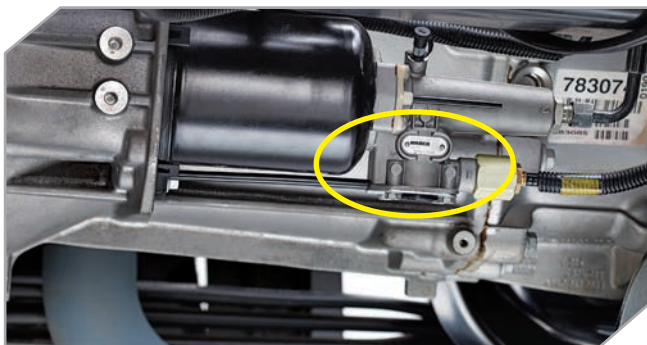


# STRESS-FREE LOW MAINTENANCE AT LOW COSTS.

With longer service intervals, the BharatBenz heavy duty tipper trucks set a new benchmark in the industry. Most of the maintenance required is cost effective and preventive in nature. This means more uptime of the vehicle which leads to more earnings and less tension for you.

## HIGH DURABILITY

All aggregates, including clutch and brake lining, are designed for higher durability. This ensures a longer, hassle-free and productive life for the vehicle and peace of mind for you.



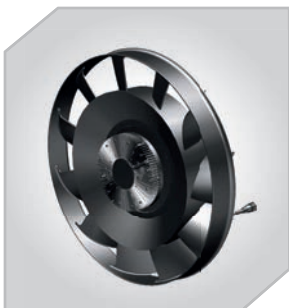
Clutch wear indicator

## CLUTCH WEAR INDICATOR

Driver-friendly indicators to monitor wear & tear (Clutch wear indicator, Air Filter Choke Indicator) help in preventive maintenance, ensuring trouble-free running.

## HUMAN MACHINE INTERFACE

Reliable and intelligent instrument cluster provides warning signals for various parameters and helps in preventive maintenance.



E-viscous fan

## E-VISCOUS FAN

The high performance engine can be cooled as and when required by the Electronic Control Unit (ECU) with the help of the Smart fan, which ensures unmatched cooling efficiency.



Special mining tyres

## LARGER TYRE SIZE

Larger tyre size of 11.00 x 20 cross-ply -16 PR in 2523C, 2528C, 3128C and 12.00 X 20 cross-ply - 18 PR mining tyre in 3128CM ensures longer tyre life. Special mining tyre option is available with 2528 (6X4) tipper for light and medium depth mining applications.



Longer service interval

## LONGER SERVICE INTERVAL

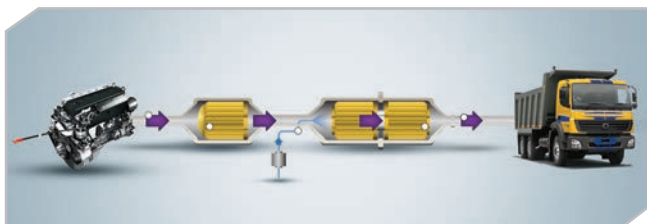
BharatBenz heavy duty tipper trucks have longer and synchronised service intervals to make sure you spend more time on the road. These tippers are designed with minimal lubrication points and offer engine oil change interval of 1000 hrs / 30,000 km, gearbox oil change interval of 2000 hrs / 90,000 km and differential oil change interval of 2000 hrs / 90,000 km, thereby reducing the frequency of lubrication and maintenance costs.

Vehicle model	Engine oil change	Gearbox oil change	Rear axle oil change	Front axle & Rear tag axle hub greasing	Rear live axle hub greasing
1623C (4X2)	1000 hrs/ 30,000 km	1000 hrs/ 30,000 km	3000 hrs/ 90,000 km	1000 hrs/ 30,000 km	3000 hrs/ 90,000 km
2523 (6X4)	1000 hrs/ 30,000 km	3000 hrs/ 90,000 km	3000 hrs/ 90,000 km	2000 hrs/ 60,000 km	3000 hrs/ 90,000 km
2528 (6X4) (Heavy)	500 hrs/ 15,000 km	1500 hrs/ 45,000 km	1500 hrs/ 45,000 km	1000 hrs/ 30,000 km	1500 hrs/ 45,000 km
2528 (6X4) (Mixed)	1000 hrs/ 30,000 km	3000 hrs/ 90,000 km	3000 hrs/ 90,000 km	2000 hrs/ 60,000 km	3000 hrs/ 90,000 km
3128 (8X4)	1000 hrs/ 30,000 km	2000 hrs/ 90,000 km	2000 hrs/ 90,000 km	2000 hrs/ 60,000 km	2000 hrs/ 90,000 km
3128CM (8X4)*	700 hrs/ 60 days	2100 hrs/ 120 days	5000 hrs/ 120 days	1400 hrs/ 120 days	NA

\*Hours or days whichever is earlier

# THE NEW FUEL EFFICIENCY BENCHMARK.

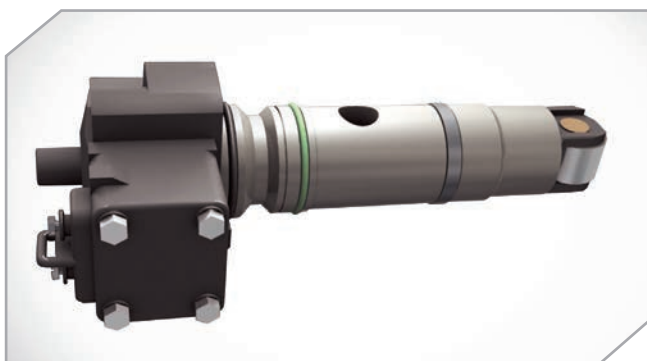
The all new BharatBenz heavy duty tipper trucks have set a fuel efficiency benchmark that surpasses the record held by our previous generation. Its efficient engine combined with advanced engineering ensures the best mileage. Such superior mileage will bring down the cost of each trip and help you earn more.



Selective catalytic reduction (SCR)

## SELECTIVE CATALYTIC REDUCTION (SCR) BSIV TECHNOLOGY

SCR is an advanced emission technology that injects AdBlue into the exhaust gases emitted while the truck is in operation. AdBlue is a high quality urea solution that reduces emission of nitrogen oxide. Used by most of the global manufacturers, SCR is considered as one of the world's most fuel efficient and profitable BSIV technologies.



Unitised fuel injection pump (in 16, 25 and 31 tonne)

## UNITISED FUEL INJECTION PUMP SYSTEM

6 individual fuel pumps, one for each cylinder, inject precise quantity of fuel at a high pressure of 1800 bar for 16, 25 and 31 tonne tippers. This ensures better combustion of fuel, delivering unmatched fuel efficiency.

## FLAT TORQUE CURVE

Peak torque is available over a wide range of engine speeds (1200-1600 rpm). And high torque is available even at low engine speeds. These superior torque characteristics reduce the need for frequent gear shifts and improve the vehicle's fuel efficiency.

## HIGH BOOST PRESSURE TURBO CHARGER

With its reduced area, the updated turbo charger design with 1.8 bar boost pressure allows more air through the air inlet, increasing airflow at significantly lower rpm, which further boosts the fuel efficiency of the BharatBenz heavy duty tipper trucks.



Variable green band

## VARIABLE GREEN BAND

Variable green band (for engine rpm) in the instrument cluster intelligently senses the optimal operating band for the vehicle and gives constant indications to the driver for economical driving. This ensures that the vehicle operates at the most fuel efficient rpm range.



Constant throttle valve engine brake

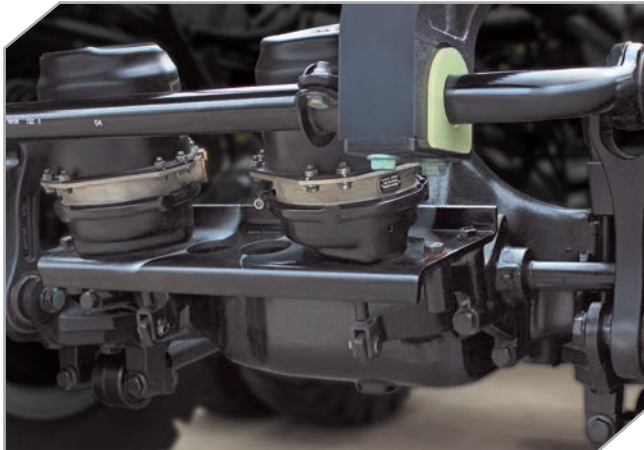
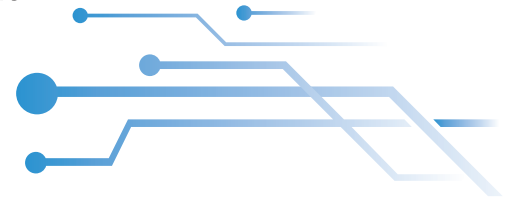
## CONSTANT THROTTLE VALVE ENGINE BRAKE

A constant throttle valve on the engine bypasses compressed air when the engine brake is on. The Electronic Control Unit (ECU) senses this and cuts fuel injection to the engine. This prevents the engine from overrunning and saves fuel when the vehicle runs with its engine brake activated.

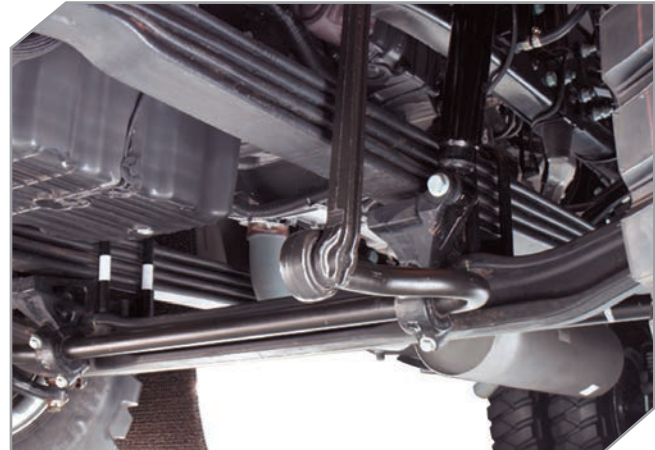


# INDIA'S SAFEST AND MOST COMFORTABLE TRUCK.

BharatBenz heavy duty tipper trucks are designed keeping the safety and comfort of your drivers in mind. Superior features ensure these vehicles are stable and aid in safe operations. This will help you avoid unforeseen problems and maximise your productivity as well as profitability.



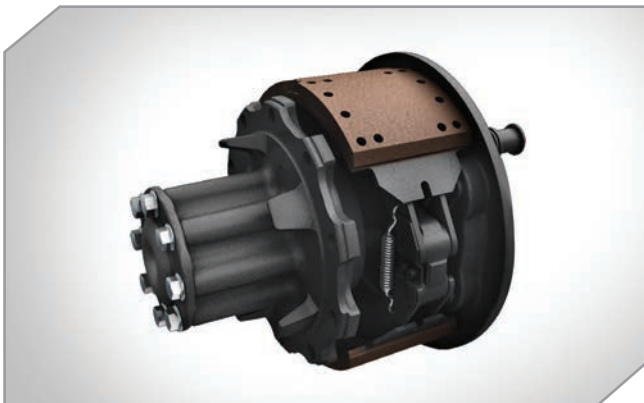
Rear anti-roll bar (3128CM)



Front anti-roll bar

## ANTI-ROLL BAR

Anti-roll bars on the front and rear axles ensure that the tyres are in constant contact with the road enabling better road grip and stability especially during cornering and lane-changing at high speeds.



Brake lining

## SHORTER BRAKING DISTANCE

Wider brake lining coupled with engine and exhaust brakes ensure efficient braking and shortest braking distance in its class.

## DIFFERENTIAL LOCK BUZZER

It alerts your driver when they drive with the differential lock switched on and helps prevent damage to the rear-axle shaft.

## SIDE IMPACT BEAM AND 3 PIECE STEEL BUMPER

For higher driver safety.

## LED LAMPS

Updated design, highly durable and ensure greater visibility in all types of light and weather conditions.

## CRASH TESTED CABIN

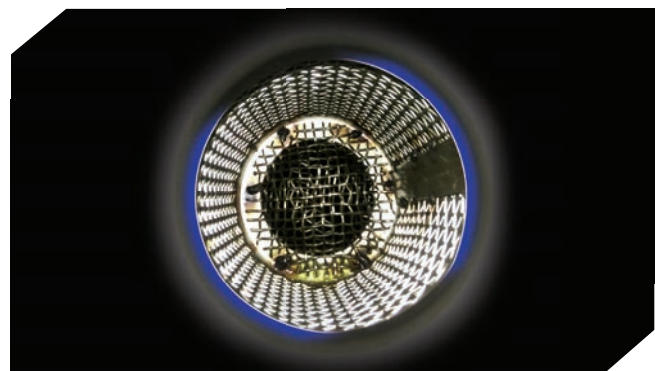
Crash tested cabin ensures maximum survival space for cabin crew in the unfortunate event of a collision.



Dual chamber headlamps

## DUAL CHAMBER HEADLAMPS

Existing headlamps switch between a high beam bulb and a low beam bulb. In dual chamber headlamps, both the bulbs glow when the high beam is activated, ensuring higher intensity light and better visibility.



Fuel theft protection device

## FUEL THEFT PROTECTION DEVICE

A meshed grill is placed at the mouth of the fuel tank to prevent any fuel theft between trips.

## ***DRIVER FRIENDLY FEATURES TO INCREASE PRODUCTIVITY.***

The cabins of BharatBenz heavy duty tippers have been carefully designed to ensure your driver remains fresh and alert for longer, thereby boosting productivity and enabling him to complete more trips. Such increased efficiency will result in higher revenues and better staff retention for you.



Provision for sleeper berth (16, 25 and 31 tonne tippers)



Customisable driving position

### ***COMFORTABLE CABIN***

- Ergonomically designed extended day cabin with provision for sleeper berth.
- Customisable driving position with a 3-way adjustable seat (reclining, horizontal and vertical) and tiltable, telescopic steering.
- Twin co-driver seat.
- A fully sealed cabin cuts off vehicle noise and reduces driver fatigue.
- Easy entry into cabin with doors opening as wide as 90°.



### — **INCREASED VENTILATION**

- Forced ventilation with blowers and optional air-conditioning ensures improved ventilation within the cabin.



Cruise control

### — **CRUISE CONTROL**

Helps your driver automatically maintain the speed of the BharatBenz heavy duty tipper with a flick of a switch, thereby ensuring fatigueless driving.



Reverse camera and display

### — **REVERSE CAMERA AND DISPLAY**

State-of-the-art technology that aids your driver in safely reversing.



Easy gear shifting

### — **EASY GEAR SHIFTING**

Simplified gear shift arrangement with ball joint mechanism and double synchrocone ensures smoother, precise gear shifting and gives you a car like driving experience.

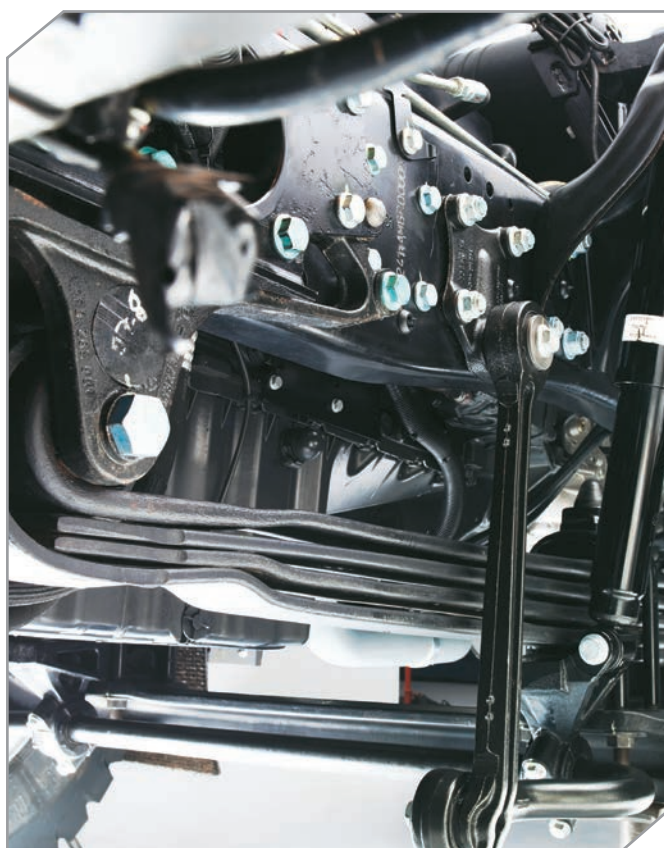
- Bigger rear sliding windows allows for better cross ventilation inside the cabin.



Intelligent instrument cluster

### — **INTELLIGENT INSTRUMENT CLUSTER**

Ideally positioned with clear visibility, the instrument cluster provides plenty of useful information like trip mileage, neutral and reverse gear indication, distance to empty fuel, etc.



Parabolic front suspension

### — **PARABOLIC FRONT SUSPENSION**

Parabolic suspension with wider mounting span improves drive quality and reduces driver fatigue, thus improving his productivity.

## ***STUNNING AESTHETICS. INSIDE AND OUT.***

With a premium wooden textured dashboard, washable trims, fabulous exteriors and more, BharatBenz heavy duty tipper trucks are a work of art.

### ● ***CUBIC PRINTED DASHBOARD***

Gives a premium appeal to the interiors of the BharatBenz heavy duty tippers and improves overall cabin aesthetics.

### ● ***ALL BLACK INTERIORS***

Easy to maintain and enhances cabin ambience.

### ● ***WASHABLE TRIMS***

Helps your driver maintain a clean cabin.

### ● ***FABULOUS EXTERIORS***

With its striking design, the BharatBenz heavy duty tippers ensures your fleet always stands out from the competition.







All black interiors



Cubic printed dashboard

TECHNICAL SPECIFICATIONS			1623C (4x2)	2523C (4x2)
Dimensions CBC (mm)				
Wheel Base		3600		4275
Overall Length		6160		7160 / 7460 (RMC)
Overall Width		2490		2490
Overall Height		2960		2975
Front Overhang		1460		1460
Rear Overhang		1100		750 / 1050 (RMC)
Minimum Ground Clearance		234		234
Weight				
Gross vehicle weight (GVW)		16,200 kg		25,000 kg
Engine				
Model		DE175BS4		DE175BS4
Maximum Power		175 kW (235 hp) @ 2200 rpm		175 kW (235 hp) @ 2200 rpm
Maximum Torque		850 Nm @ 1200 - 1600 rpm		850 Nm @ 1200 - 1600 rpm
No. of Cylinders, Displacement		6 Nos, 6372 cc		6 Nos., 6372 cc
Emission Compliance		BSIV		BSIV
Gearbox				
Gearbox Model & Type		G85, 6F+1R, Mechanical, Synchromesh Gears		G131 – 9F+1R, Mechanical, Synchromesh gears
Clutch Type, Diameter		Single dry plate, Hydraulic control with clutch booster, 395 mm		Single dry plate, Hydraulic control with clutch booster, 395 mm
Axle				
Front Axle Model, Type		IR 6.6, Reverse elliot type		IF 6.6, Reverse elliot
Rear Axle Model, Type		IR 440-11, Fully floating, Hypoid gears		RA1 - IRT 390-11 Hypoid gears/ RA2 - IRT 390T-11, Topoid gears
Rear Axle Ratio		5.875		5.375
Chassis frame & Suspension				
Chassis Type		Channel Section with cross members		Channel Section with cross members
Depth x Flange Width x Thickness		288 mm x 70 mm x 9 mm		288 mm x 70 mm x 9 mm
Front Suspension		Parabolic leaf spring with 2 hydraulic shock absorbers		Parabolic leaf spring with 2 hydraulic shock absorbers
Rear Suspension		Semi elliptical auxiliary leaf spring		Inverted semi elliptical tandem bogie
Anti-roll Bar		Standard on both axles		Standard on both axles
Brakes & Tyres				
Service Brake		Pneumatic, Foot operated, Dual line with ABS		Pneumatic, Foot operated, Dual line with ABS
Parking Brake		Pneumatically operated hand control valve		Pneumatically operated hand control valve
Wheel Rims & Tyres		7.50 x 20, 10.00x20–16 PR/ 10R20-16PR		7.50 x 20, 11.00 x 20 – 16 PR/ 11.00 R20 – 16 PR
Steering & Cabin				
Steering Type		Hydraulic power assisted		Hydraulic Power assisted
Cabin		Day cabin, Tilttable		Day cabin, Tilttable
Fuel tank & Electricals				
Fuel Tank		260 litres		290 litres
AdBlue Tank		60 litres		60 litres
Voltage		24 V Electrical System		24 V Electrical System
Battery Capacity		2 x 12 V, 120 Ah		2 x 12 V, 120 Ah
Performance				
Maximum Gradeability @ crawler		40.41%		53%
Maximum Geared Speed		60 km/h		60 km/h
Minimum Turning Circle Diameter		13.5 m		15.5 m
Configuration				
Standard		Cabin with Chassis		Fully built 16 Cu.M Box Tipper
Option		Fully built 10.5 Cu.M Box Tipper		Fully built 14 Cu.M Box Tipper
Option pack		Comfort Pack (HVAC)		Comfort Pack (HVAC) & RMC Pack



## 2528C (6x4)

## 2528CM (6x4)

### Dimensions CBC (mm)

Wheel Base	4275	4275
Overall Length	7160 / 7460 (RMC)	7160
Overall Width	2490	2490
Overall Height	2975	2975
Front Overhang	1460	1460
Rear Overhang	750 / 1050 (RMC)	750
Minimum Ground Clearance	234	234

### Weight

Gross vehicle weight (GVW)	25,000 kg	25,000 kg
----------------------------	-----------	-----------

### Engine

Model	DE210BS4	DE210BS4
Maximum Power	210 kW (281 hp) @ 2200 rpm	210kW (281 hp) @ 2200 rpm
Maximum Torque	1120 Nm @ 1200 - 1600 rpm	1120 Nm @ 1200 - 1600 rpm
No. of Cylinders, Displacement	6 Nos., 6372 cc	6 Nos., 6372 cc
Emission Compliance	BSIV	BSIV

### Gearbox

Gearbox Model & Type	G131 – 9F+1R, Mechanical, Synchromesh gears	G131 – 9F+1R, Mechanical, Synchromesh gears
Clutch Type, Diameter	Single dry plate, Hydraulic control with clutch booster, 430 mm	Single dry plate, Hydraulic control with clutch booster, 430 mm

### Axle

Front Axle Model, Type	IF6.6, Reverse Elliot	IF6.6, Reverse Elliot
Rear Axle Model, Type	RA1 - IRT390-11 Hypoid gears/ RA2 - IRT 390T-11, Topoid gears	Hub reduction axle RA2 - IRT390T-11, Topoid gears
Rear Axle Ratio	5.375	5.39

### Chassis frame & Suspension

Chassis Type	Channel Section with cross members	Channel Section with cross members
Depth x Flange Width x Thickness	288 mm x 70 mm x 9 mm	288 mm x 70 mm x 9 mm
Front Suspension	Parabolic type leaf spring with 2 hydraulic shock absorbers	Parabolic leaf spring with 2 hydraulic shock absorbers
Rear Suspension	Inverted semi elliptical tandem bogie	Inverted semi elliptical tandem bogie
Anti-roll Bar	Standard on both axles	Standard on both axles

### Brakes & Tyres

Service Brake	Pneumatic, Foot operated, Dual line with ABS	Pneumatic, Foot operated, Dual line with ABS
Parking Brake	Pneumatically operated hand control valve	Pneumatically operated hand control valve
Wheel Rims & Tyres	7.50 x 20, 11x20 – 16PR/11.00x20–18 PR (Mining)	7.50 x 20, 11.00x20–18 PR (Mining)

### Steering & Cabin

Steering Type	Hydraulic Power assisted	Hydraulic Power assisted
Cabin	Day cabin, Tilttable	Day Cabin, Tilttable

### Fuel tank & Electricals

Fuel Tank	290 litres	290 litres
AdBlue Tank	60 litres	60 litres
Voltage	24 V Electrical System	24 V Electrical System
Battery Capacity	2 x 12 V, 120 Ah	2 x 12 V, 120 Ah

### Performance

Maximum Gradeability @ crawler	80%	80%
Maximum Geared Speed	60 km/h	60 km/h
Minimum Turning Circle Diameter	15.5 m	15.5 m

### Configuration

Standard	Fully Built 16 Cu.M Box Tipper	Fully built 16 Cu.M Scoop Tipper
Option	Fully Built 14 Cu.M Scoop Tipper	Fully built 16 Cu.M Box Tipper
Option pack	Comfort Pack (HVAC) & RMC Pack	Comfort Pack (HVAC)

## TECHNICAL SPECIFICATIONS

### 3128C (8x4)

### 3128CM (8x4)

#### Dimensions CBC (mm)

Wheel Base	5175	5175
Overall Length	8060/8360 (RMC)	8060
Overall Width	2550	2490
Overall Height	3000	3030
Front Overhang	1460	1460
Rear Overhang	750/1050 (RMC)	750
Minimum Ground Clearance	234	287

#### Weight

Gross vehicle weight (GVW)	31,000 kg	31,000 kg
----------------------------	-----------	-----------

#### Engine

Model	DE210BS4	DE210BS4
Maximum Power	210kW (281 hp) @ 2200 rpm	210kW (281 hp) @ 2200 rpm
Maximum Torque	1120 Nm @ 1200-1600 rpm	1120 Nm @ 1200-1600 rpm
No. of Cylinders, Displacement	6 Nos, 6372 cc	6 Nos, 6372 cc
Emission Compliance	BSIV	BSIV

#### Gearbox

Gearbox Model & Type	G131 – 9F+1R, Mechanical, Synchromesh gears	G131 – 9F+1R, Mechanical, Synchromesh gears
Clutch Type, Diameter	Single dry plate, Hydraulic control with clutch booster, 362 mm	Single dry plate, Hydraulic control with clutch booster, 430mm

#### Axle

Front Axle Model, Type	IF6.6, Reverse Elliot	VL4-7.5, Reverse Elliot
Rear Axle Model, Type	RA1 - IRT390-11 Hypoid gears/ RA2 - IRT390T-11, Topoid gears	Hub Reduction axle
Rear Axle Ratio	5.375	6.18

#### Chassis frame & Suspension

Chassis Type	Channel Section with cross member	Channel Section with cross members
Depth x Flange Width x Thickness	288 mm x 70 mm x 9 mm	288 mm x 70 mm x 9 mm
Front Suspension	Parabolic leaf spring with 2 hydraulic shock absorbers	Parabolic leaf spring with 2 hydraulic shock absorbers
Rear Suspension	Inverted semi elliptical tandem bogie	Inverted semi elliptical tandem bogie
Anti-roll Bar	Standard on both axles	Standard on both axles

#### Brakes & Tyres

Service Brake	Pneumatic, Foot operated, Dual line with ABS	Pneumatic, Foot operated, Dual line with ABS
Parking Brake	Pneumatically operated hand control valve	Pneumatically operated hand control valve
Wheel Rims & Tyres	7.50 x 20, 11.00 x 20 – 16 PR/ 11R20 optional	8.50 x 20, 12.00 x 20 – 18 PR

#### Steering & Cabin

Steering Type	Hydraulic Power assisted	Hydraulic power assisted
Cabin	Day Cabin, Tilttable	Day cabin, Tilttable

#### Fuel tank & Electricals

Fuel Tank	260 litres	260 litres
AdBlue Tank	60 litres	60 litres
Voltage	24 V Electrical System	24 V Electrical System
Battery Capacity	2 x 12 V, 120 Ah	2 x 12 V, 120 Ah

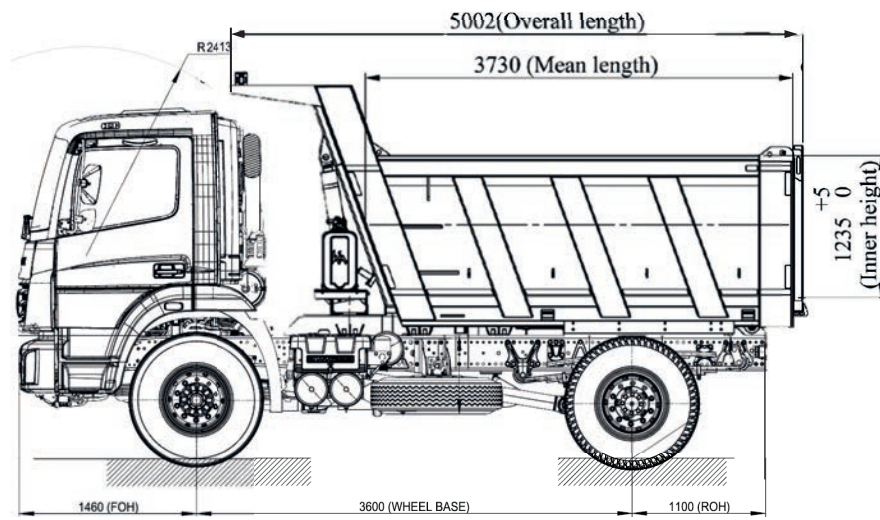
#### Performance

Maximum Gradeability @ crawler	58%	66.87%
Maximum Geared Speed	60 km/h	60 km/h
Minimum Turning Circle Diameter	19.2 m	19.2 m

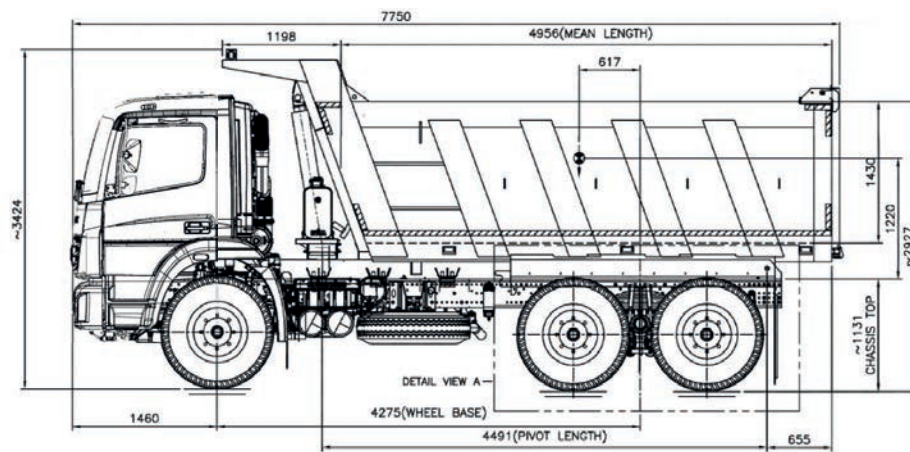
#### Configuration

Standard	Fully built 19 Cu.M Box Tipper	Fully built 23 Cu.M Box Tipper
Option		
Option pack	Comfort Pack (HVAC) & RMC Pack	Fully built 18 Cu.M Scoop Tipper

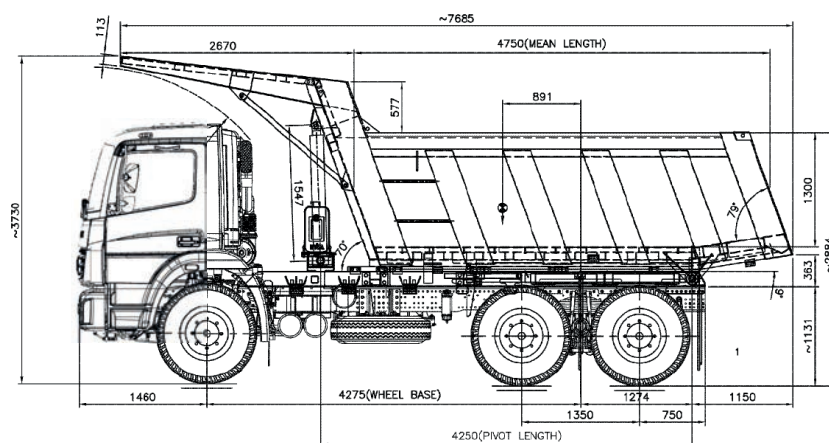




● **1623C**



● **2523C**



● **2528C**







## ONE STOP TRUCKING SOLUTION.

BharatBenz is committed to Indian trucking. Our rigorous study of the conditions has enabled us to build trucks ready to take on the challenges posed by Indian terrains and businesses, head on. Our state-of-the-art manufacturing plant in Chennai is only one of the many steps in our journey on Indian roads.

### PROSERV

SERVICE THAT LOOKS AHEAD FOR YOU

DESIGNED TO DELIVER



- One Stop Service Workshop: Guaranteed service support any time of the day.
- Highly Productive Express Bays: Roadside assistance for all the quick fixes your BharatBenz truck requires, helping you save precious time.
- Specialist Driver Trainers: Expert trainers who will help your driver learn efficient and safe driving.
- Advanced diagnostic systems: To aid in troubleshooting and eliminating unforeseen problems.
- Dial a service or part: Call up to book a service or to ensure the availability of any part.

EXPERIENCE EXPERTISE



- Highly skilled service staff to ensure quick and perfect service every time.
- Online technical information platform – Ascent (After Sales Central) a multilingual, animated system to facilitate information access at all service centres.
- Mobile service workshops to ensure reach within 4 hours in case of emergency.
- Exclusive 24x7 customer support and technical hotline for all service needs.
- Customised on-site service support to ensure high uptime.

STAY A STEP AHEAD



Ascent

- Maintenance Pack that will take care of all maintenance-related needs for the next 5 years.
- Extended Warranty to ensure high-cost aggregate repairs will be the least of your concerns for up to 5 years.
- BharatBenz Insurance: a cashless facility with towing and zero-depreciation features to ensure quick repairs anywhere in India.

### BHARATBENZ Financial



- Structured EMI payback options customised to suit your business's cashflow.
- Innovative "All in One EMI" provides a fully integrated financing solution for the vehicle, maintenance pack, insurance and extended warranty.
- 24x7 customer support to provide hassle-free claims management across India.

Call on our toll-free no.: 180030012345 or email us at [dicv\\_service@daimler.com](mailto:dicv_service@daimler.com)

**Daimler India Commercial Vehicles Pvt. Ltd.**

SIPCOT Industrial Growth Centre, Oragadam,  
Mathur Post, Sriperumbudur Taluk,  
Kancheepuram District - 602105, Tamil Nadu, India.

Ph: +91 44 49694000; Fax: +91 44 49694881

Email: [sales\\_dicv@daimler.com](mailto:sales_dicv@daimler.com); Website: [www.bharatbenz.com](http://www.bharatbenz.com)

Options and features shown may not be part of standard equipment. Colours may vary owing to printing. Images shown are indicative and may not represent the actual products or services. BharatBenz trucks conform to Bharat Stage IV norms. Specifications are subject to change without notice. These are indicative specifications for reference only.

Date of print: 3<sup>rd</sup> April, 2017